










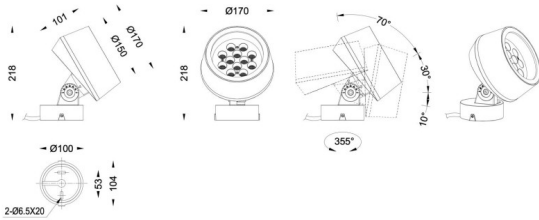
BEAM MODULES

| | |
|-----------------|--|
| Code article | 86.OS01.3331.02 |
| Type de produit | |
| Catégorie | Projecteurs |
| Famille | BEAM |
| Sous-famille | BEAM MODULES |
| Pictograms | <div><div><div>220 240 V</div></div><div><div>850°</div></div><div><div>CRI</div><div>80</div></div><div><div>SDCM</div><div>3</div></div></div> <div><div><div>Driver INCL.</div></div><div><div>On</div><div>Off</div></div><div></div><div></div></div> <div><div>50000h L70B10</div><div>IP 65</div><div><div>335°</div></div><div><div>90°</div></div><div>IK 05</div></div> |

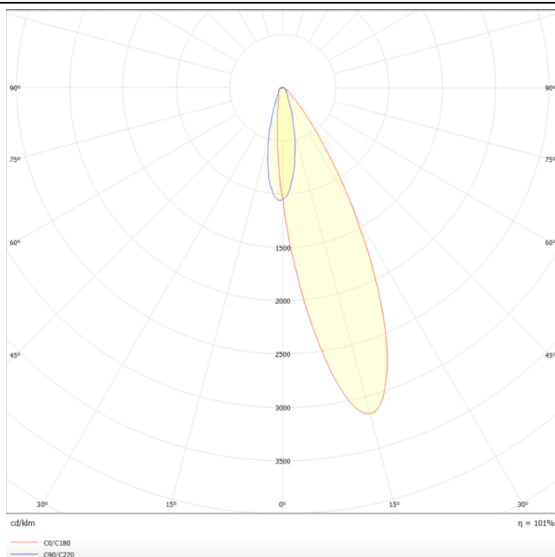
Dimensions

| | |
|--------------------------------|--------------------------|
| Product dimensions (mm) | 170(Dia)X101(H)mm |
|--------------------------------|--------------------------|

Dessin technique



Distribution photométrique



| | |
|-------------------------------|--------------------|
| Produit | |
| Puissance système (W) | 36 |
| Flux lumineux utile (lm) | 2450 |
| Efficacité lumineuse (lm/W) | 68.055555555555998 |
| Angle de faisceau | 25 |
| Durée de vie | 50000h L70B10 |
| IP | 66 |
| Marque de la LED | Osram |
| Équipement | ON-OFF |
| Durée de vie utile (h) | 50000h L70B10 |
| Température de couleur (K) | 3000 |
| Uniformité chromatique (SDCM) | SDCM3 |
| CRI | 80 |
| IK | IK08 |